

**BOARD OF INTERMEDIATE AND SECONDARY EDUCATION \_\_\_\_\_**  
**GRADE – V ASSESSMENT 2017**

**GENERAL SCIENCE**

Roll No.						
Student Name: _____ (In Capital)						

Center No. _____
Center Name: _____
Superintendent Name/ Stamp: _____

ہدایات:

- 1- ہر سوال کے چار ممکنہ جوابات دیے گئے ہیں۔ ان میں سے صرف ایک جواب درست ہے۔ آپ نے درست جواب کے دائرے کو سامنے دیے گئے طریقے سے مکمل سیاہ کرنا ہے۔
- 2- دائروں کو شیڈ بھرنے کے لیے کالے یا نیلے رنگ کا پین استعمال کریں۔
- 3- جواب میں ایک سے زیادہ دائرے بھرنے سے جواب غلط تصور ہو گا۔

Time Allowed: 45 Minutes

**SECTION – A**

Total Marks: 30

Q.1	Which of the following is a vertebrate?  <input type="radio"/> spider <input type="radio"/> snail <input type="radio"/> scorpion <input type="radio"/> snake	Q.5	The microorganisms which cannot live outside a living cell is  <input type="radio"/> bacteria <input type="radio"/> virus <input type="radio"/> algae <input type="radio"/> fungi
Q.2	Monocot plants have  <input type="radio"/> two cotyledon <input type="radio"/> narrow and pointed leaves <input type="radio"/> four or five floral parts <input type="radio"/> tap roots	Q.6	The conversion of milk into yogurt is because of  <input type="radio"/> virus <input type="radio"/> algae <input type="radio"/> fungi <input type="radio"/> bacteria
Q.3	Lung diseases are mostly caused by  <input type="radio"/> air pollution <input type="radio"/> water pollution <input type="radio"/> noise pollution <input type="radio"/> land pollution	Q.7	The part of seed which contains food for embryo is called  <input type="radio"/> radical <input type="radio"/> cotyledon <input type="radio"/> hypocotyl <input type="radio"/> epicotyl
Q.4	Non-biodegradable materials  <input type="radio"/> clean the environment <input type="radio"/> pollute the environment <input type="radio"/> increase the fertility of land <input type="radio"/> increase soil erosion	Q.8	Water pollution is mostly caused by  <input type="radio"/> birds <input type="radio"/> fish <input type="radio"/> trees <input type="radio"/> people


**GRADE – V ASSESSMENT 2017**

**GENERAL SCIENCE**

Roll No.						
----------	--	--	--	--	--	--

Q.9	To avoid infection we should  <input type="radio"/> take exercise only <input type="radio"/> observe cleanliness <input type="radio"/> eat more food <input type="radio"/> take long sleep	Q.15	Moon of first day is called  <input type="radio"/> crescent moon <input type="radio"/> quarter moon <input type="radio"/> waning moon <input type="radio"/> full moon
Q.10	To reduce air pollution we should  <input type="radio"/> burn wood for cooking <input type="radio"/> cut the trees <input type="radio"/> plant more trees <input type="radio"/> use more vehicles	Q.16	The rate of flow of charges is called  <input type="radio"/> current <input type="radio"/> volt <input type="radio"/> resistance <input type="radio"/> power
Q.11	The distance among the molecules of a gas is  <input type="radio"/> less than solid <input type="radio"/> less than liquid <input type="radio"/> greater than solid and liquid <input type="radio"/> equal to solid and liquid	Q.17	The process in which liquid is converted into gaseous state is called  <input type="radio"/> melting <input type="radio"/> freezing <input type="radio"/> boiling <input type="radio"/> burning
Q.12	A cyclist bends forward to  <input type="radio"/> balance the cycle <input type="radio"/> reduce air friction <input type="radio"/> balance himself <input type="radio"/> increase the speed	Q.18	A person sitting in a moving bus falls forwards when brakes are applied suddenly because of  <input type="radio"/> friction <input type="radio"/> gravity <input type="radio"/> inertia <input type="radio"/> air resistance
Q.13	Moisture settled on plants is called  <input type="radio"/> rain <input type="radio"/> snow <input type="radio"/> fog <input type="radio"/> dew	Q.19	Ali wants to load heavy box on a truck, which type of machine will he use?  <input type="radio"/> lever <input type="radio"/> inclined plane <input type="radio"/> pulley <input type="radio"/> wedge
Q.14	We can see clearly through  <input type="radio"/> opaque objects <input type="radio"/> transparent objects <input type="radio"/> translucent objects <input type="radio"/> wooden objects	Q.20	Quantity of matter in a body is called  <input type="radio"/> volume <input type="radio"/> mass <input type="radio"/> weight <input type="radio"/> density

Roll No.						
----------	--	--	--	--	--	--

Q.21	<p>All are electromagnetic devices except</p> <p><input type="radio"/> radio</p> <p><input type="radio"/> electric bell</p> <p><input type="radio"/> electric bulb</p> <p><input type="radio"/> television</p>	Q.26	<p>The use of oil and grease in a machine reduce its</p> <p><input type="radio"/> mass</p> <p><input type="radio"/> weight</p> <p><input type="radio"/> friction</p> <p><input type="radio"/> efficiency</p>
Q.22	<p>When a ball pen is rubbed with hair, the small pieces of paper are attracted towards pen, because of</p> <p><input type="radio"/> sticky nature of pen</p> <p><input type="radio"/> sticky nature of paper</p> <p><input type="radio"/> electric charge</p> <p><input type="radio"/> magnetic force</p>	Q.27	<p>Water runs slowly through</p> <p><input type="radio"/> silt</p> <p><input type="radio"/> sand</p> <p><input type="radio"/> clay</p> <p><input type="radio"/> loam</p>
Q.23	<p>In rainy days lightning is caused by</p> <p><input type="radio"/> static charges</p> <p><input type="radio"/> moving charges</p> <p><input type="radio"/> high pressure</p> <p><input type="radio"/> thunder storm</p>	Q.28	<p>The closest planet to earth is</p> <p><input type="radio"/> Saturn</p> <p><input type="radio"/> Mercury</p> <p><input type="radio"/> Plato</p> <p><input type="radio"/> Jupiter</p>
Q.24	<p>Light travels a _____ path</p> <p><input type="radio"/> straight</p> <p><input type="radio"/> curved</p> <p><input type="radio"/> rectangular</p> <p><input type="radio"/> zig zag</p>	Q.29	<p>The device which discovered that light travels in a straight line is</p> <p><input type="radio"/> microscope</p> <p><input type="radio"/> pin hole camera</p> <p><input type="radio"/> prism</p> <p><input type="radio"/> telescope</p>
Q.25	<p>When Sana comes back to home from school at 2:30pm, her shadow is formed</p> <p><input type="radio"/> west to sun and large in size</p> <p><input type="radio"/> at the same place and very small in size</p> <p><input type="radio"/> east to sun and large in size</p> <p><input type="radio"/> at the same place and very large in size</p>	Q.30	<p>Iron objects are lifted by crane as shown in figure due to</p>  <p><input type="radio"/> light weight of iron objects</p> <p><input type="radio"/> heavy weight of crane</p> <p><input type="radio"/> electromagnet used in crane</p> <p><input type="radio"/> hook of the crane</p>

**BOARD OF INTERMEDIATE AND SECONDARY EDUCATION \_\_\_\_\_**  
**GRADE – V ASSESSMENT 2017**

**GENERAL SCIENCE**

Roll No.						
Student Name: _____ (In Capital)						

Center No. _____
Center Name: _____
Superintendent Name/ Stamp: _____

ہدایات:

- 1- ہر سوال کا جواب دینا ضروری ہے۔  
2- جواب دینے سے پہلے سوال کو غور سے پڑھیں۔  
3- سوال کا جواب دی گئی جگہ پر تحریر کریں۔

Time Allowed: 75 Minutes	SECTION – B	Total Marks: 45
--------------------------	-------------	-----------------

1. Write two characteristics of flowering and non-flowering plants. 4 Marks


2. (a) Define soil 1 Mark


(b) Write the names of 2 types of soil. 1 Mark


BOARD OF INTERMEDIATE AND SECONDARY EDUCATION \_\_\_\_\_

GRADE – V ASSESSMENT 2017

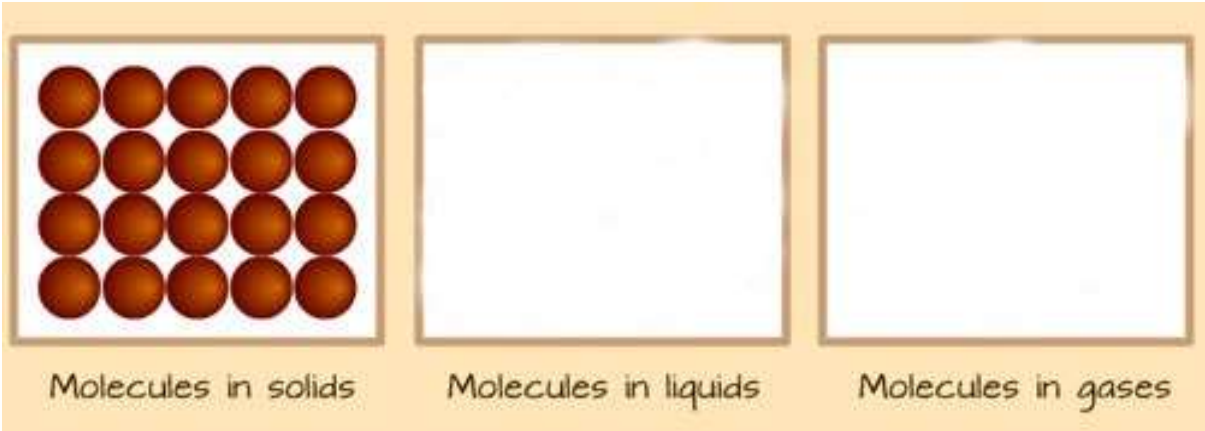
**GENERAL SCIENCE**

Marking Criteria for Section B

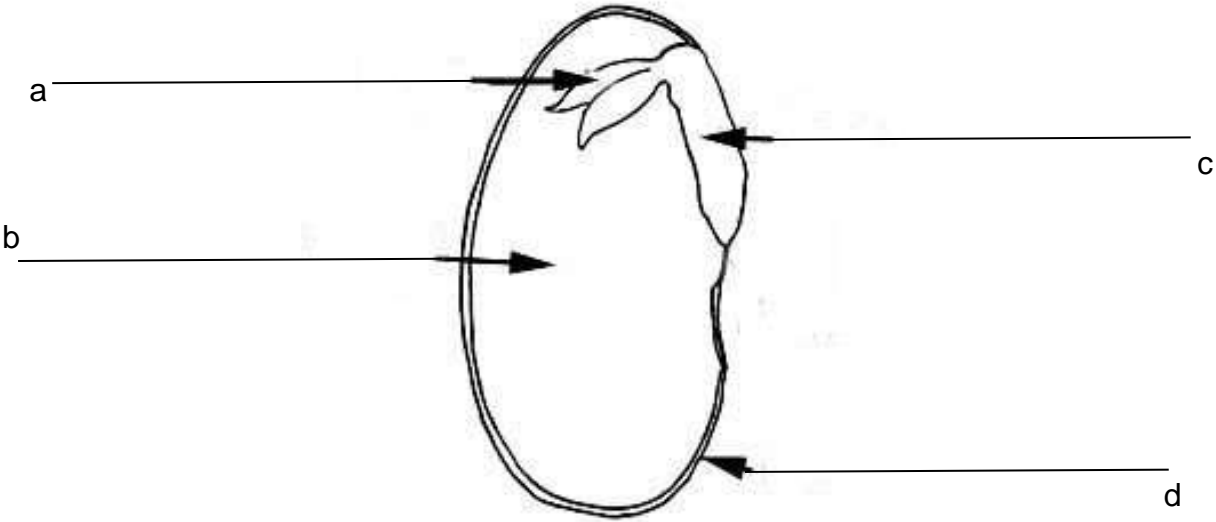
3. Give TWO examples of each of the following. 4 Marks

S.No	Vertebrates	Invertebrates
1		
2		

4. Draw the arrangement of molecules in liquids and gases. 4 Marks



5. Label the given seed diagram. 4 Marks



6. Arrange these bar magnets to make a square (label north and south pole on each bar magnet). 4 Marks



Marking Criteria for Section B

7. (a) Why do we use fuse in a circuit? 2 marks

---

---

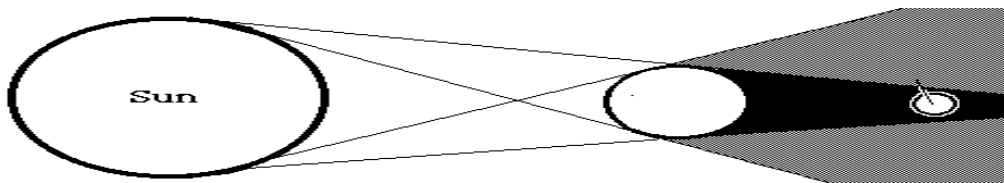
---

---

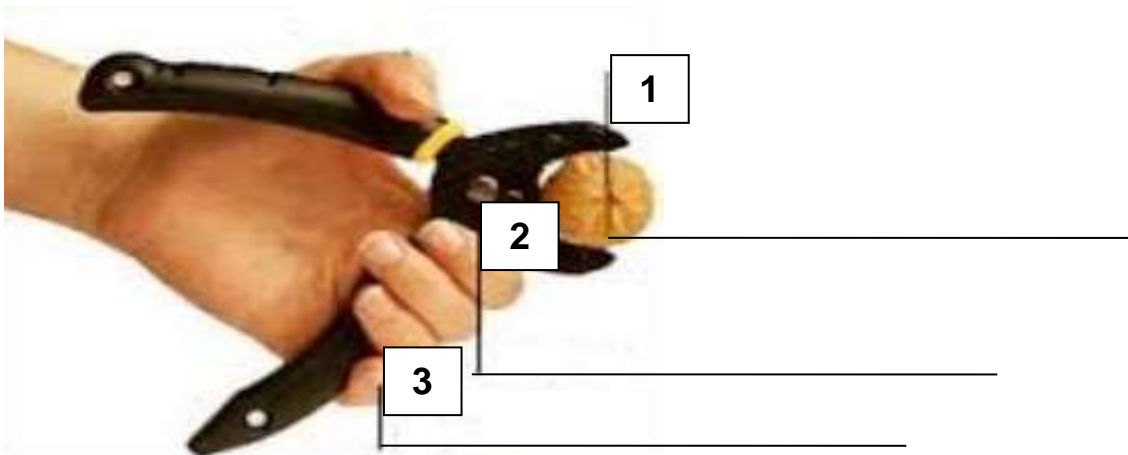
---

- (b) Name the eclipse.

2 marks



8. Identify the type of lever show below, also write fulcrum, load and effort at their proper place.  
4 Marks

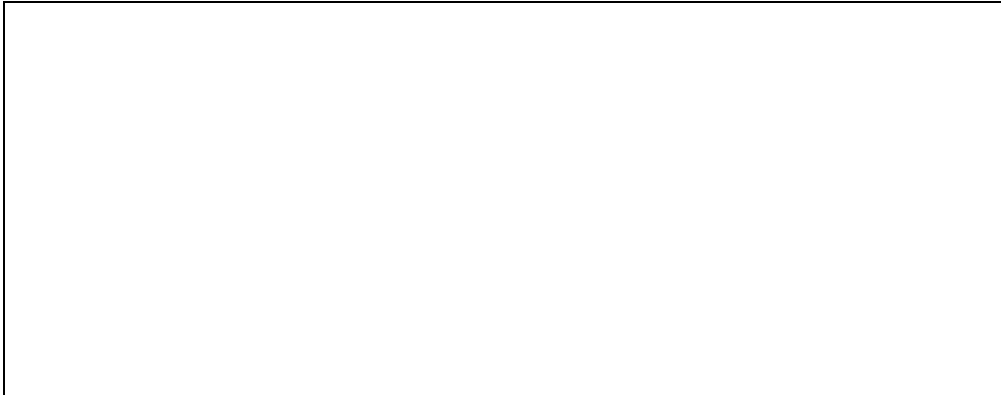


Lever type: \_\_\_\_\_

**Marking Criteria for Section B**

9. Draw a closed electric circuit. (Showing cell, wire, bulb)

4 Marks



10. If you hit the paper, what will happen to the coin and why?

4 Marks



---

---

---

---

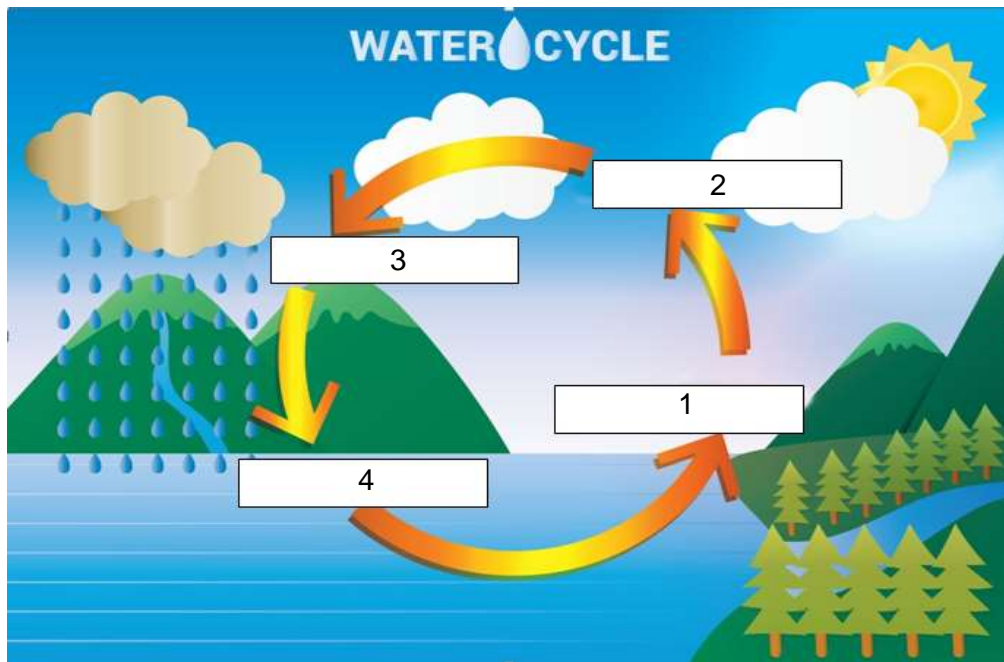
---

Marking Criteria for Section B

11. Write the names of processes in the given water cycle.

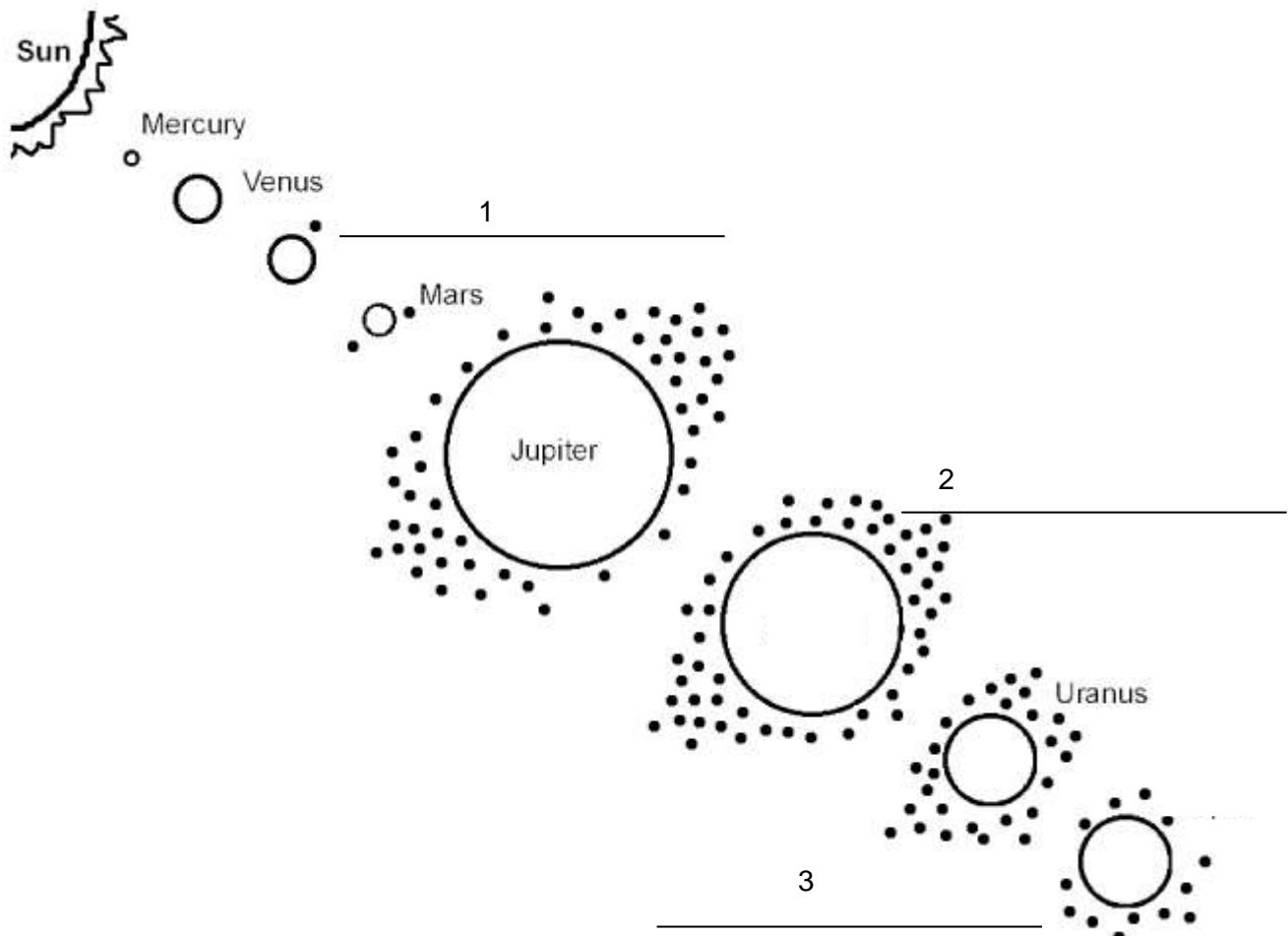
4 Marks

(condensation, evaporation, precipitation, collection)



12. Write the missing planets name in the given diagram.

3 Marks



**GRADE – V ASSESSMENT 2017**

**GENERAL SCIENCE**

**Marking Criteria for Section B**

**Q.1.** 4 Marks

	Possible Answers	Marks
Flowering Plants	Flowering plants produce flowers for their reproduction	1
	Flowering plants produce seeds and seeds germinate into new plants	1
Non- flowering plants	Non flowering plants do not bear flowers	1
	They grow on damp soil near drainage pipes type	1

**Q.2.** 2 Marks

(a)

Possible Answers	Marks
Soil is the major portion of the Earth's surface which supports the growth of plants and provides shelter for different animals.	0.5

(b)

Possible Answers	Marks
(i) Sand (ii) Clay (iii) Silt	0.5 for each option (Total 1.5 for all 3 correct answeres)

**Q.3.** 4 Marks

	Possible Answers	Marks
Vertebrates	Name of any two animals with backbone e.g. (i) Fishes (ii) Frogs (iii) tortoise (iv) snakes (v) crocodile (vi) sparrow (vii) kiwi	2
Invertebrates	Name of any two animals without backbone e.g. (i) Mosquito (ii) Cockroach (iii) Ant	2

BOARD OF INTERMEDIATE AND SECONDARY EDUCATION \_\_\_\_\_

GRADE – V ASSESSMENT 2017

GENERAL SCIENCE

Marking Criteria for Section B

Q.4. 4 Marks

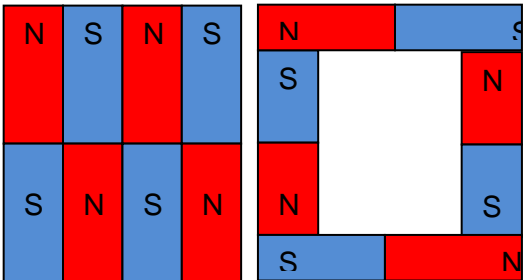
Possible Answers	Marks
Liquid molecules: distance shown between molecules is more than the solid	2
Gas molecules: distance shown between molecules is more than the liquid	2

Q.5. 3 Marks

Possible answer	Marks
a) Epicotyl: upper left label	1 marks for each correct label
b) Cotyledons: lower left label	
c) Hypocotyl: upper right label	
d) Seed Coat: lower right label	

Q.6. 4 Marks

4 magnets together with 4 correct direction:	04 marks
4 magnets together with 3 correct direction:	03 marks
4 magnets together with 2 correct direction:	02 marks
2 or 3 magnets together with 2 correct direction:	01 marks
All 4 incorrect direction:	0
All separate magnets:	0



Q.7. 4 Marks

(a).

Possible answer	Marks
We use fuse in a circuit to stop the flow of current when it exceeds the safety level.	2

(b). 2 Marks

Possible Answer	Marks
Lunar Eclipse	2

Q.8. 4 Marks

Possible Answers	Marks
a) load	1 mark for each correct labelling
b) fulcrum	
c) effort	
d) lever type: first class lever	1

Q.9. 4 Marks

a) Possible Answer	Marks
b) Showing Cell	1 for each correct labelling
c) Showing Wire	
d) Showing bulb	
e) Cell, wire and bulb are connected	1

GRADE – V ASSESSMENT 2017

GENERAL SCIENCE

Marking Criteria for Section B

Q.10. 4 Marks

Possible Answer	Marks
The coin will drop into glass	2
The coin will drop into glass due to inertia. Heavier the weight the higher will be inertia and more force is required to change it from the original position. Since the coin is heavier than the thick card, so flicking the card will move the piece of card due to less inertia (light weight). The coin will drop into glass due to inertia (heavy weight)	2

Q.11. 4 Marks

Possible answer	Marks
1) Evaporation	1 marks for each correct label
2) Condensation	
3) Precipitation	
4) Collection	

Q. 12. 3 Marks

Possible Answer	Marks
1) Earth	1 for each correct labelling
2) Saturn	
3) Neptune	
4) Neptune	