

AGA KHAN UNIVERSITY EXAMINATION BOARD

SECONDARY SCHOOL CERTIFICATE

CLASS IX EXAMINATION





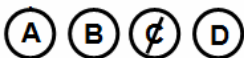
MAY 2015

Pakistan Studies Paper I

Time: 30 minutes Marks: 20

INSTRUCTIONS

1. Read each question carefully.
2. Answer the questions on the separate answer sheet provided. DO NOT write your answers on the question paper.
3. There are 100 answer numbers on the answer sheet. Use answer numbers 1 to 20 only.
4. In each question there are four choices A, B, C, D. Choose ONE. On the answer grid black out the circle for your choice with a pencil as shown below.

Correct Way		Incorrect Ways	
1		1	
		2	
		3	
		4	

Candidate's Signature

5. If you want to change your answer, ERASE the first answer completely with a rubber, before blacking out a new circle.
6. DO NOT write anything in the answer grid. The computer only records what is in the circles.

1. Which of the following is the CORRECT difference between a welfare and an Islamic state?

	Islamic State	Welfare State
A	Education is not compulsory	Education is compulsory
B	All basic rights are protected	All basic rights are not protected
C	Laws are based on the Shariah	Laws are based on human made constitution.
D	Only Muslim religious places are protected	All religious places are protected

2. In 1947, Quaid-e-Azam addressed the constituent assembly and talked about the legacies which need to be ended in order to bring stability in the country. These were

- A. bribery, nepotism and jobbery.
- B. black marketing, bribery and terrorism.
- C. caste system, bribery and black marketing.
- D. corruption, unfair elections and nepotism.

3. Ideology is important for a nation because it

- A. always advocates justice.
- B. gives a sense of direction.
- C. emphasises punctuality.
- D. helps in dealing with daily issues.

4. Simla Deputation of 1906 was a land mark for the Muslims of the subcontinent because it led to the

- A. partition of Bengal.
- B. signing of Lucknow Pact.
- C. formation of Muslim League.
- D. promulgation of Vernacular Act.

5. The picture given below is that of JallianWala Bagh incident occurred in 1919. This incident was the consequence of



- A. Rowlatt Act.
- B. Direct Action Day.
- C. Khilafat Movement.
- D. Reversal of Bengal Partition.

6. "All the surplus produce of a fertile land under a most bounteous providence was swept into the coffers of the Mughal nobility and pampered them in a degree of luxury not dreamt of even by kings in Persia or Central Asia."

From the writings of Sir Jadunath Sarkar.

Source: The History and Culture of Pakistan by Nigel Kelly

According to the source, the reason for the decline of the Mughal Empire was

- A. religious extremism.
 - B. military degradation.
 - C. lack of communication.
 - D. extravagance of the ruling class.
7. The immediate cause of the War of Independence 1857 in the subcontinent was
- A. Doctrine of Paramouncy.
 - B. fat-coated cartridges.
 - C. Christian missionaries.
 - D. imposition of taxes.
8. The Doctrine of Lapse was a law regarding the annexation of states which decreed that any local kingdom will be taken over by the British if its ruler
- A. does not pay taxes.
 - B. does not have a direct male heir.
 - C. belongs to the Muslim community.
 - D. belongs to the Hindu community.
9. The system of Diarchy was abolished in the provinces and was established in the central government of the subcontinent. This became the reason for the opposition of
- A. Indian Act 1858.
 - B. Morley Minto Reforms 1909.
 - C. Montague Chelmsford Reforms 1919.
 - D. Government of India Act 1935.
10. Though the Second Round Table Conference was attended by Congress, it was not able to reach any conclusive result due to
- A. Gandhi's stubborn attitude.
 - B. disagreement among the minorities.
 - C. Jinnah's absence from the conference.
 - D. change of government in Britain.

11. In the given map, which option correctly identifies Afghanistan?

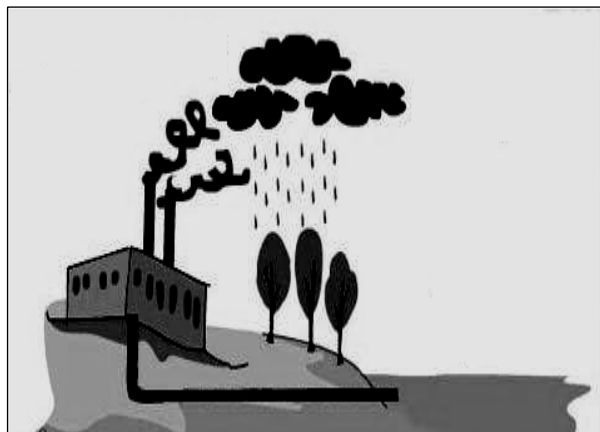


12. If a place has 21°C summer temperature, 7°C winter temperature and 1500 mm annual rainfall, its climate will be classified as

- A. arid.
- B. semi-arid.
- C. coastal.
- D. highland.

13. Identify the source of pollution given in the picture.

- A. Industrial emission
- B. Human waste
- C. Fertilizers and pesticides
- D. Vehicles



14. Which of the following irrigated forests of Pakistan is denoted by 'X' in the map below?



- A. Khanewal forest.
B. Thal forest.
C. Hyderabad forest.
D. Chichawatni forest.
15. To meet the energy requirements of Pakistan, in 2013, the government inaugurated
- A. KANUPP 2.
B. CHASNUPP 2.
C. Coastal Power Project.
D. Jhimpir Wind Power Plant.
16. The main cause of water logging in Pakistan is due to the construction of
- A. barrages.
B. tube wells.
C. perennial canals.
D. inundation canals.
17. Irrigates vast areas, major supplier of hydro electric power, difficult to maintain, high initial investment cost – all of these are features of
- A. dams.
B. barrages.
C. lift irrigation.
D. canal irrigation.

18. Temperature: 25°C to 35°C. Mild night temperatures are better.
Soil: Medium loam is best.
Rainfall: Ample rainfall is preferred, about 1000 mm annually.

The above given information reflects the natural factors that are ideal for the growth of

- A. rice.
B. wheat.
C. cotton.
D. sugarcane.
19. Apart from crude oil, another mineral which can be used to produce electricity is
- A. magnetite.
B. barite.
C. coal.
D. sulphur.
20. Which of the following is the correct sequence of activities in the process of rice cultivation?

A	Preparation of fields	Planting	Growth	Harvesting
B	Planting	Preparation of fields	Growth	Harvesting
C	Planting	Harvesting	Growth	Preparation of fields
D	Preparation of fields	Growth	Planting	Harvesting

Please use this page for rough work

Please use this page for rough work