

AGA KHAN UNIVERSITY EXAMINATION BOARD

SECONDARY SCHOOL CERTIFICATE

CLASS IX EXAMINATION

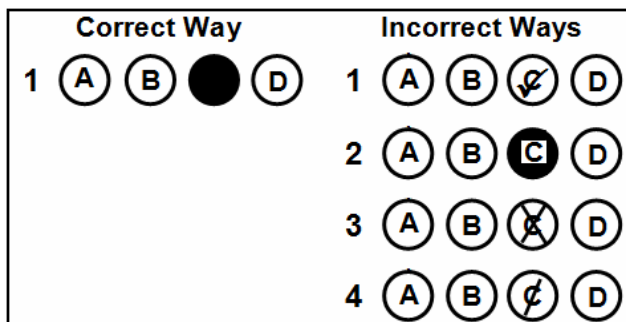
MAY 2015

Computer Science Paper I

Time: 35 minutes Marks: 25

INSTRUCTIONS





1. Read each question carefully.
2. Answer the questions on the separate answer sheet provided. DO NOT write your answers on the question paper.
3. There are 100 answer numbers on the answer sheet. Use answer numbers 1 to 25 only.
4. In each question there are four choices A, B, C, D. Choose ONE. On the answer grid black out the circle for your choice with a pencil as shown below.



Candidate's Signature

5. If you want to change your answer, ERASE the first answer completely with a rubber, before blacking out a new circle.
6. DO NOT write anything in the answer grid. The computer only records what is in the circles.

1. Which of the following was the first successful commercial computer developed after Von Neumann gave the idea of the stored-program technique?
 - A. EDSAC
 - B. ENIAC
 - C. UNIVAC
 - D. UNIX
2. Napier's idea of logarithms gave birth to another very useful calculating device called the
 - A. slide ways.
 - B. abacus.
 - C. slide rule.
 - D. ruler.
3. Which of the following is/are example(s) of hybrid technology?
 - I. Radar systems
 - II. Robots
 - III. Laptops
 - A. I only
 - B. I and II
 - C. I and III
 - D. II and III
4. All of the following were the main developments during the second generation of computers EXCEPT
 - A. use of low and high level programming languages.
 - B. invention of integrated circuits.
 - C. invention of transistors.
 - D. use of system software.
5. Which of the following is/are the feature(s) of ROM?
 - I. Permanent storage
 - II. Easy to modify
 - III. Volatile
 - A. I only
 - B. I and II
 - C. I and III
 - D. II and III
6. All of the following devices can be connected through USB EXCEPT
 - A. monitors.
 - B. speakers.
 - C. webcam.
 - D. printers.
7. A device which reads an image from a paper and transfers it into computer's memory is called a
 - A. keyboard.
 - B. joystick.
 - C. scanner.
 - D. mouse.
8. 1 terabyte is equal to
 - A. 2^{30} bytes
 - B. 2^{40} bytes
 - C. 2^{50} bytes
 - D. 2^{60} bytes
9. Which of the following permanently store(s) user's data in Gigabytes?
 - I. DVD
 - II. Hard disk
 - III. RAM
 - A. I only
 - B. I and II
 - C. I and III
 - D. II and III

10. Which of the following is a feature of CDs?
- A. Fixed disk
 - B. Optical storage disk
 - C. Sequential access storage
 - D. Storage capacity up to 17 GB
11. The decimal equivalent of hexadecimal number 41 is
- A. 78
 - B. 68
 - C. 65
 - D. 5
12. $(1011)_2$ is equal to
- A. $(11)_8$
 - B. $(13)_8$
 - C. $(16)_8$
 - D. $(51)_8$
13. $(1010)_2$ \times $(10)_2$ is equal to
- A. $(1000000)_2$
 - B. $(1100000)_2$
 - C. $(10100000)_2$
 - D. $(11000000)_2$
14. The 2's complement of $(01100111)_2$ will be
- A. $(10111000)_2$
 - B. $(10011001)_2$
 - C. $(11011001)_2$
 - D. $(10011000)_2$
15. All of the following are functions of Windows Operating System EXCEPT
- A. to manage file storage.
 - B. to execute user commands.
 - C. to inform users about errors.
 - D. to convert source code into object code.
16. The folder in which MS Windows stores deleted files and folders is called
- A. desktop.
 - B. recycle bin.
 - C. control panel.
 - D. my documents.
17. A paragraph is written using font 'Calibri', font size '8' and font style 'Italic'. The user wants to apply same setting to multiple places in the same document. Which of the following MS Word options should he use?
- A. 
 - B. 
 - C. 
 - D. 
18. Which of the following MS Word options is used to convert capital letters into small letters for the selected text?
- A. Change case
 - B. Change font size
 - C. Change font style
 - D. Change paragraph indenting
19. By default, the paper size for printing a document in MS Word is
- A. A4.
 - B. legal.
 - C. letter.
 - D. executive.
20. In PowerPoint, compress, rise up, unfold and float are different options of
- A. animation scheme.
 - B. design template.
 - C. colour scheme.
 - D. slide layout.

21. We can make pie charts and other graphs to analyze the data in
- A. word processing software.
 - B. web browsing software.
 - C. presentation software.
 - D. spreadsheet software.
22. Which of the following DOS commands deletes all files including directories and subdirectories?
- A. DEL
 - B. DELTREE
 - C. ERASE
 - D. RMDIR
23. In MS DOS, which of the following commands is used to create a directory named "AKUEB"?
- A. DIR AKUEB
 - B. FORMAT AKUEB
 - C. MD AKUEB
 - D. TYPE AKUEB
24. Which of the following software is used to create professional and personalized newsletters, brochures, post cards and calendars?
- A. Desktop publishing
 - B. Presentation
 - C. Database
 - D. Graphics
25. Which of the following is/are the feature(s) of command line interface?
- I. It is simple and user-friendly.
 - II. It uses less memory resources.
 - III. Typing a short command is faster than clicking several icons.
- A. II only
 - B. I and II
 - C. I and III
 - D. II and III